

Model CP

CARTRIDGE DUST COLLECTOR



MURPHY
©Copyright®

N.R. MURPHY LTD.
430 Franklin Boulevard,
Cambridge, Ontario N1R 8G6

Telephone: 519-621-6210
Fax: 519-621-2841
EMAIL: 4nodust@nrmurphy.com
WEB SITE: www.nrmurphy.com

The Murphy Model CP Cartridge style dust collector, the ultimate in design, offers you many advantages in effectively filtering large or small volumes of fine, dust laden air with a very compact profile. As one of the many models in our "C" series group of cartridge style dust collectors, it is suitable for dust extraction in most areas of industry.

Some of the major features:

- compact design - minimal space required
- continuous pulse type cleaning
- inlet location
- painted heavy gauge galvanized construction
- flexible design
- optional equipment

The Murphy Model CP dust collector features the latest in new filtration technology. Using a pleated non woven filter media in a cylindrical style cartridge gives three to four times the filter surface area in the same physical size, as that of a conventional tube style dust collector. Each cylindrical cartridge is 22" long featuring 150 sq ft. (13.9M²) of highly efficient filter media. The number of cartridges required depends on the application.

The Murphy Model CP dust collector features a continuous pulse type cleaning. This regularly loosens and allows the excess dust cake which has formed on the outside of the cartridge, to fall away, thus maintaining a highly efficient filtration for a continuous operation.

The Murphy Model CP dust collector features a unique top-sided inlet, high in the filtration area, complete with a replaceable primary impaction baffle. Dust laden air is forced to move in a downward motion throughout the collector, thus using the law of gravity to our very best advantage. This minimizes the short circuiting of dust from one cartridge to another when cleaning and also minimizes the dust loading on the cartridges themselves.

The Murphy Model CP dust collector features heavy gauge galvanized all welded construction, painted a standard colour finish coat (other colours available on request). Preassembly at factory enables quick on-site installation by others. It requires only a properly sized foundation or pad and a crane to set the dust collector in place. (Optional: Knockdown designs available. Please check with factory.)

The Murphy Model CP dust collector features not only an economical compact profile, but is flexible in design enabling us to expand the collector in any direction without sacrificing efficiency. A few sizing considerations are, the C.F.M., the site location and the type of material. Some of the available types of material discharges are hopper or bin storage, drum storage, continuous rotary air lock discharge and screw conveyor discharge, all depending on the desired requirement of the particular application.

The Murphy Model CP dust collector features optional equipment:

- all sizes of fan packs complete with motors ranging from 500 CFM to 50,000 CFM and beyond, matched to filter requirements.
- explosion venting
- silencer packages
- several styles and types of discharges
- inlet sizes available in 1" increments from 7" to 33" diameter and beyond

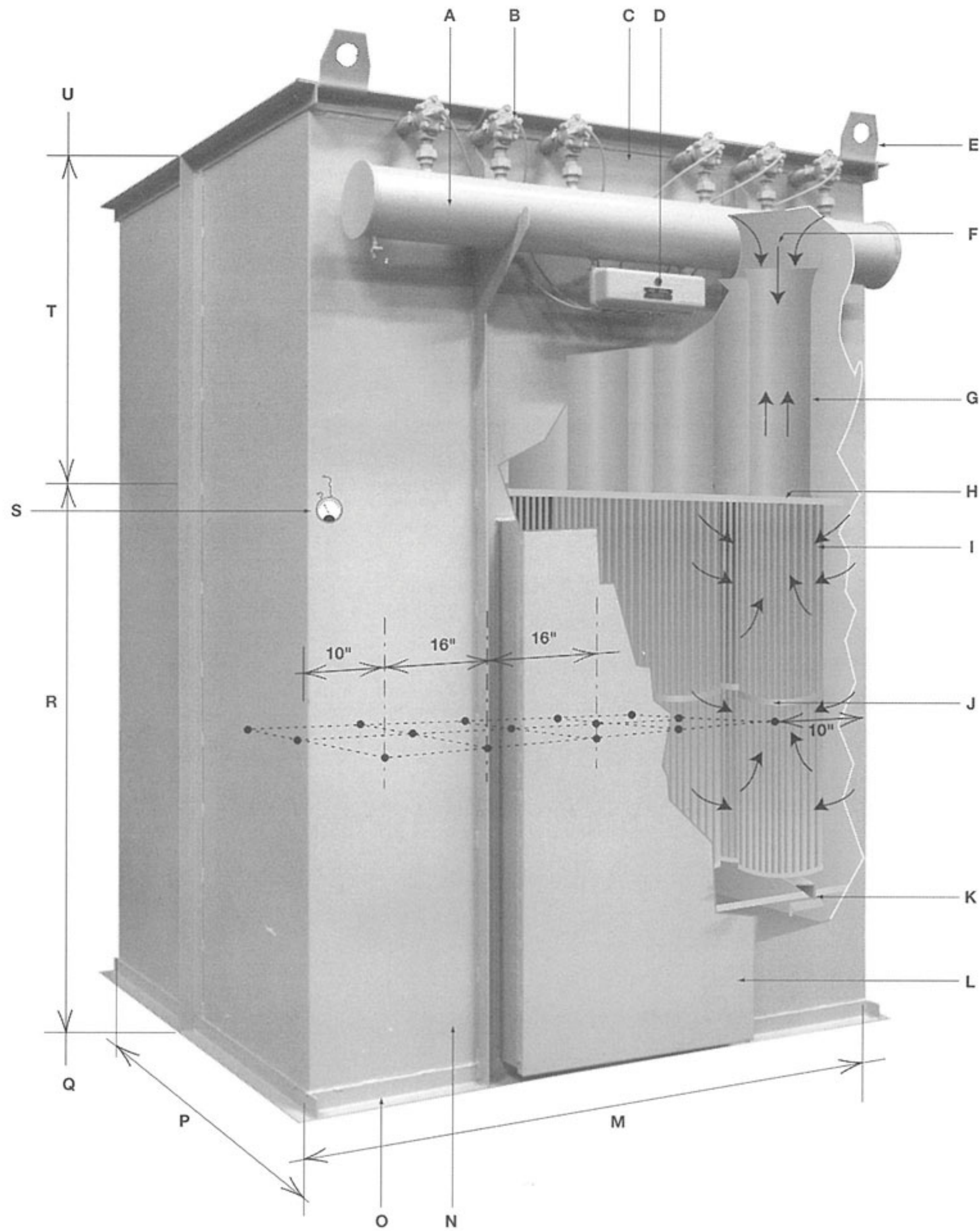
NOTES:

- The cartridge cleaning system requires 80 - 100 P.S.I.G of clean dry in-plant compressed air. Valves and control operate on 120V - 60 cycle power.
- The adjustable cartridge mounting support makes it easy to remove or install the filter cartridges through large access doors even when heavily laden with dust (see diagram) but caution should be taken when lowering to ground.
- Filter cartridges are factory installed before shipping (with exception in some designs)

Murphy technical representatives are located throughout Canada and the United States to assist you in selecting the proper dust collector to solve your dust problem with no obligation.

ADDITIONAL FEATURES

- Proven Efficiency
- Very Reasonable Cost
- Low Cost Installation
- Suitable for Inside or Outside Installation
- Quiet Operation
- Minimum Maintenance
- Ideally Suited for Very Fine Dusts
- Either Pull Through or Blow Through
- Special Coatings or Materials Available
- Can be Used as Primary or Secondary Filter

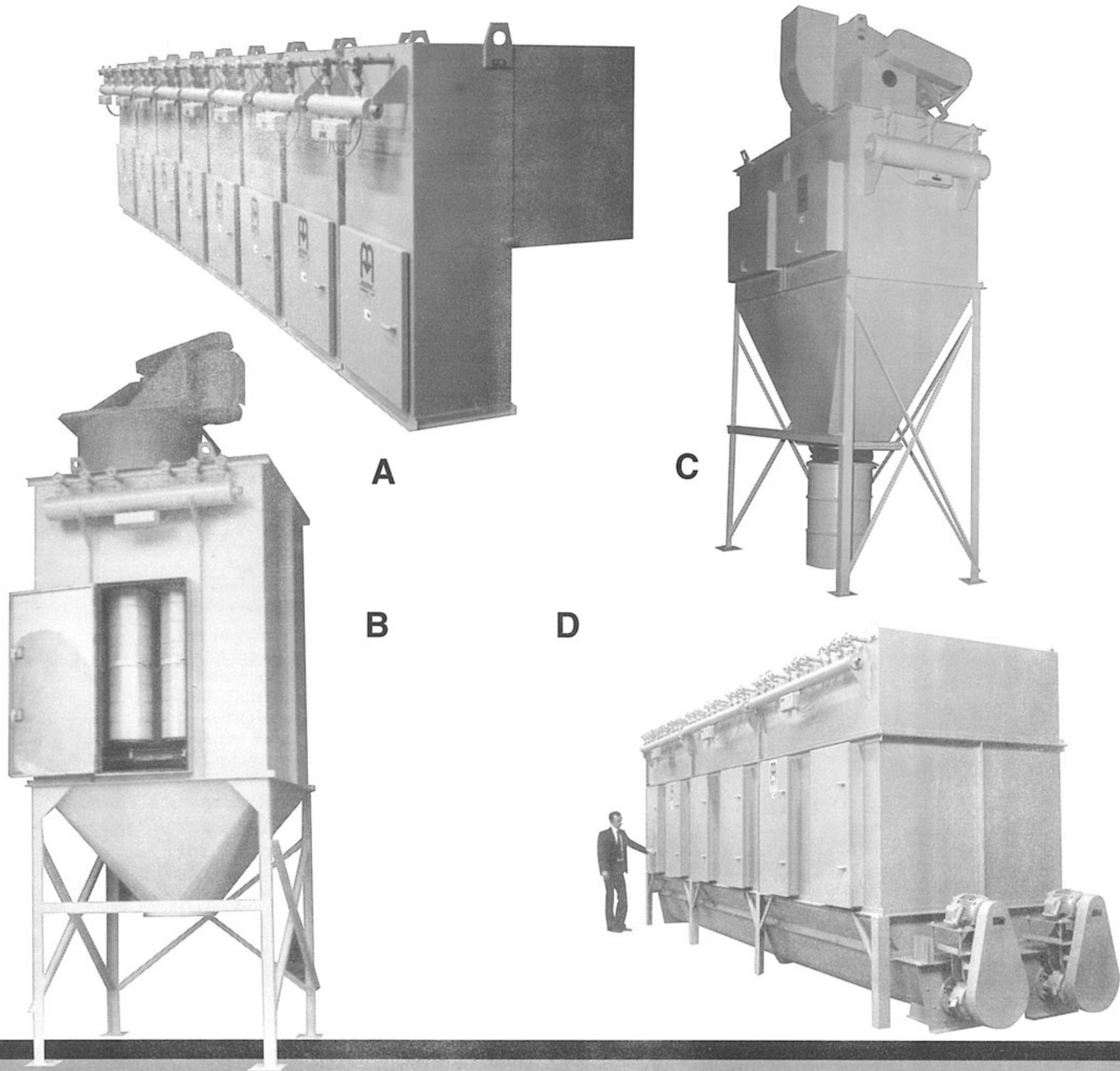


- A - Surge Chamber complete with 1" N.P.T. inlet, drain valve either end and pressure gauge not shown.
- B - Diaphragm valve and orifice tubes.
- C - Inspection port on surge chamber side (location nominal).
- D - Factory installed solenoid valve enclosure.
- E - Lifting lugs (located where required).
- F - Pulse jet and induced air from clean air plenum when cleaning.
- G - Venturi sections.
- H - Cell plate and sealing gasket.
- I - Cylindrical style cartridges showing open style two high, various styles available (150² (13.9M²) of filter media per cartridge in all styles).
- J - Sealing gasket.
- K - Quick release adjustable mounting support for ease of cartridge removal and installation, **no tools required.**
- L - Access door is 27" x 54" for two cartridges high and 26 1/4 x 28" for one cartridge high.

- M - Length = required number of filters.
- N - 12 gauge galvanized steel painted our standard colour.
- O - 2" x 2" x 3/16" angle frame nominal.
- P - Three cartridge wide by one or two high (see Q). Standard width is 60" with inlet high in filter area for down flow action. (Inlet installed on back side only.)
Optional: 48" wide with inlet in hopper area. (Inlet can be installed on any side.)
NOTE: Inlet size varies depending on requirements.
- Q - OPTIONAL MATERIAL DISCHARGES:
 - Various hopper and bin sizes
 - Rotary air lock
 - Screw conveyor
 - Support frame and legs
 - Drum storage, when using drum storage 42" is required for drum and flexible drum connector plus hopper height.
- R - Standard measurement required for two cartridges high 57"- for one cartridge high is 31" (two cartridge high shown).

- S - Manometer (optional), hose connections factory installed no hose supplied. Manometer shipped loose site location optional).
- T - Standard measurement required for clean air plenum is 33" when two cartridge high selected, and 25" when one cartridge high is selected. NOTE: Clean air outlet size varies depending on requirements and can be installed any side with exception of surge chamber side.
- U - Optional: Various sizes and voltages of fan packs complete with motors (factory mounted onto dust collector or supplied separate). Various sizes and configurations of silencer packages.

NOTE: For exact O.D. on a particular sized DUST COLLECTOR check with factory.



A The above photo showing eight CP 2/1/1 pulse type continuous cleaning dust collectors is complete with 300 sq. ft. (27.87m²) of highly efficient non woven filter media. The CP 2/1/1, made of heavy gauge galvanized construction is painted with our standard colour. There is a large access door for ease of cartridge removal and installation, a 3 H.P. TEFC fan pack and silencing package. These particular collectors are used for bin venting. They can also be used in other areas – for example – on individual bag and drum dumping stations, down draft tables, combination hood and unit vacuum systems for remote conveyor belt transfer points having compressed air, electric vibration, or manual type cleaning on Model CS.

B The above CP 4/3/2 pulse type continuous cleaning dust collector is complete with 3600 sq. ft. (334.4M²) of highly efficient non woven filter media. It is built of heavy gauge galvanized construction with a large access door. Also pictured is an optional hopper bottom to one drum and support stand (drum and connector not shown). The optional fan pack is mounted on top of the dust collector. The front cover also shows a CP 4/3/2 but without options. The collectors were designed for and installed in the blast cleaning and Foundry Industries.

C The above photo shows a CP3/5/2-S dust collector complete with pulse type continuous cleaning with a compressed air manifold each end. All standard equipment consists of 4500 sq. ft. (418M²) of highly efficient non woven filter media, heavy gauge galvanized construction and 2 large access doors. (Access doors can also be mounted in each end.) Options include: hopper styled bottom with a shutoff slide gate for the purpose of dumping the drum while the dust collector is still operating, optional drums, flexible drum connector and support stand.

D The above photo shows a CR 18/3/2 dust collector complete with pulse type continuous cleaning, 16,200 sq. ft. (1050M²) of highly efficient non woven filter media, is heavy gauge galvanized construction, six large access doors, all standard equipment. Optional twin 25 ft long x 12" diameter screw conveyors complete with 2 - 3 H.P. TEFC motors, drives and support legs. This dust collector has an exceptional compact profile for the large square footage of filter media. It uses an industrial fan with 100 H.P. TEFC motor to circulate the dust laden air through the collector. This collector was designed for underground installation in the Mining Industry.