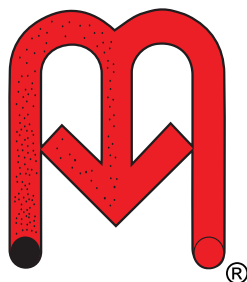




# HE SERIES

**HEC  
HEC Bin Vent**



**N.R. MURPHY LTD.**  

---

**DUST COLLECTORS**

# OVERVIEW

HEC DUST COLLECTOR

4

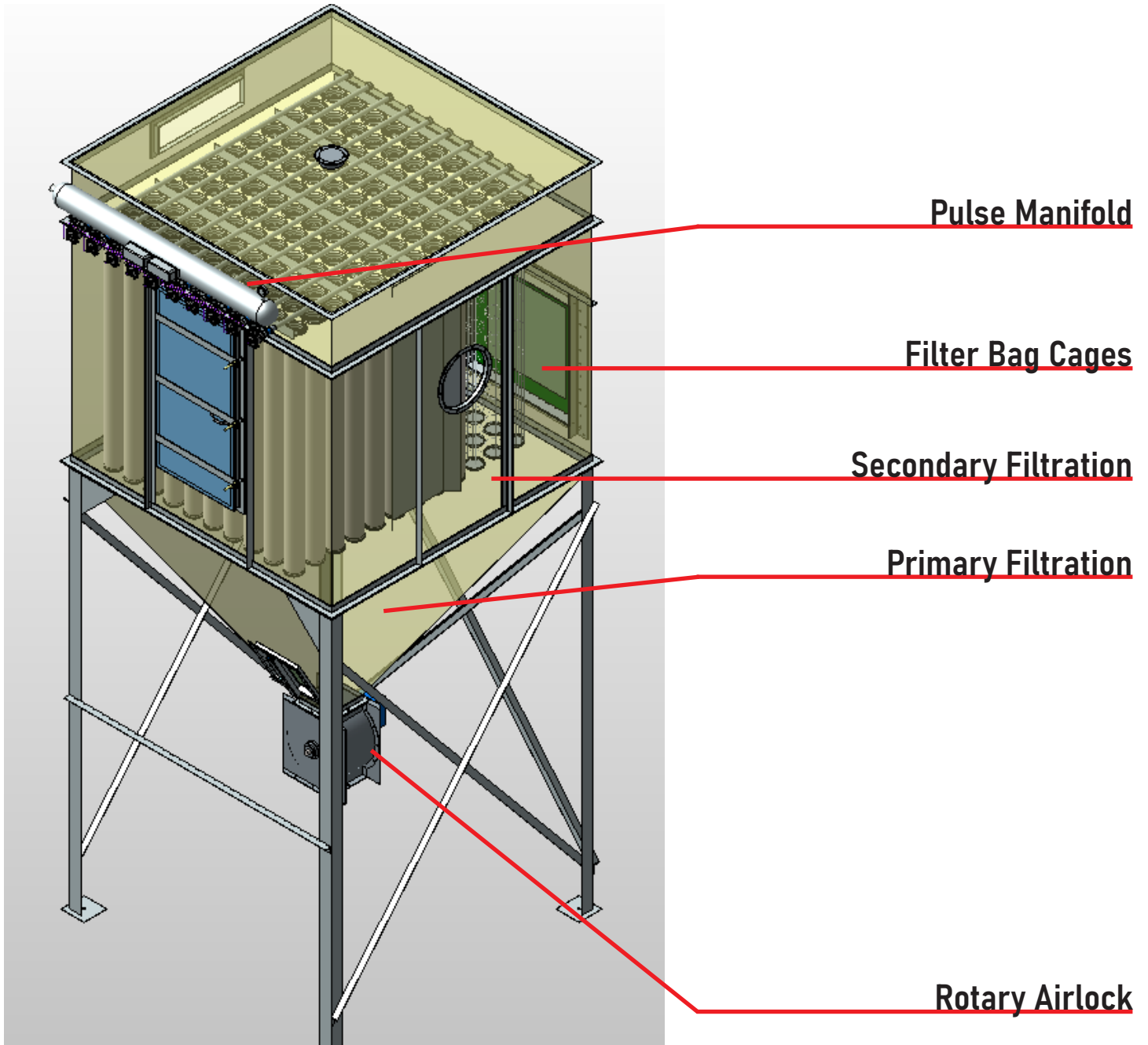
HEC BIN VENT

6



HE SERIES MANUAL  
[www.nrmurphy.com/manuals](http://www.nrmurphy.com/manuals)

N.R. Murphy Ltd.'s HE Series provides a continuous duty, automatic self cleaning filtration system for companies with no production downtime to ensure maximum productivity. Run 24 hours a day, 7 days a week for no hassle dust collection.



#### FEATURES

- High efficiency
- Customizable design
- Ships preassembled
- Satin Coat Construction
- Zinc coated hardware
- Easily replaceable parts
- Continuous material discharge
- Customized cleaning timer

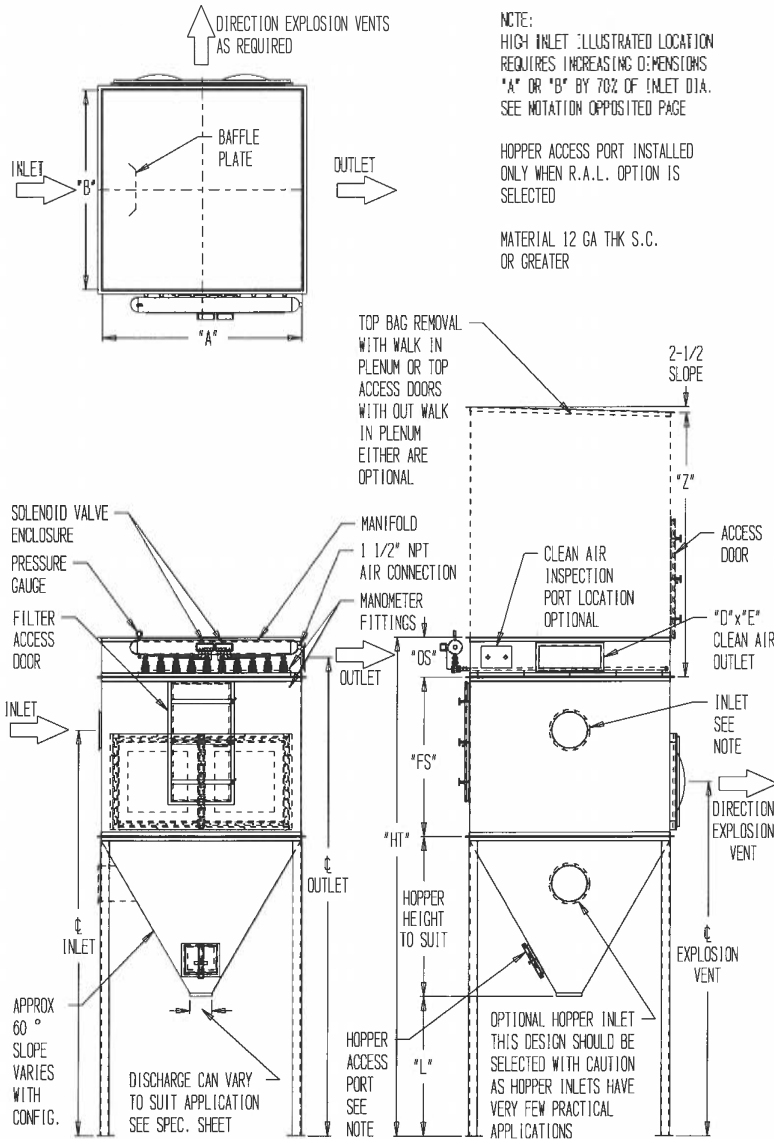
# HEC

To provide continuous service, the Model HEC dust collector features a pulse jet self cleaning system which uses compressed air at 80 to 100 psig to pulse off accumulated dust, thus maintaining a constant pressure drop across filters. This is accomplished by using a series of solenoid-controlled valves which are activated by a timer to release a jet of compressed air from the dust collector's manifold. The air travels under pressure through a piped system to a nozzle directly over a venturi, and into the bag.

Available in either a clean side or dirty side removal filter sections and with a variety of lengths and materials. Accessories include: platforms, railings and access ladders for easy maintenance as well as rotary air locks, and screw conveyors for 24/7 waste removal.



Check EA-1 exhaust fan performance charts for required C.F.M. and resistance in N.R. Murphy Ltd.'s exhaust fan catalogue.  
NOTE: The C.F.M. mentioned in charts are a guide only. Please check with factory. Normal pressure drop allowance across units is 3" SP. N.R. Murphy Ltd. reserves the right to make changes to the information presented, product changes, and correct typographical errors without notice.



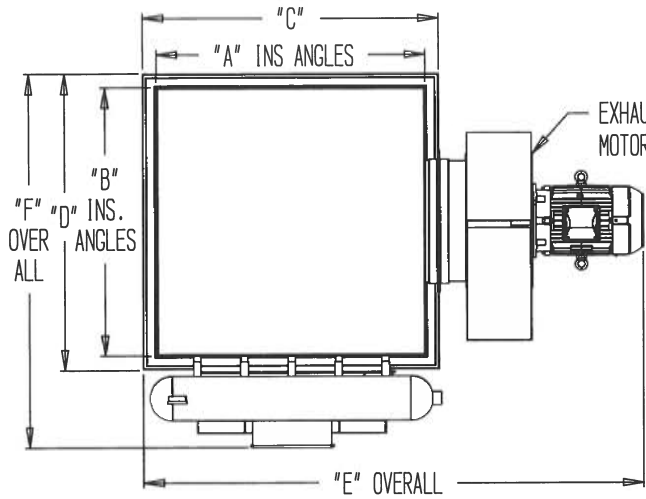
| Model     | A    | B    | CO (STD)<br>Material<br>Discharge | FS  | HT   | L   | OS  | Max C.F.M. |
|-----------|------|------|-----------------------------------|---|--|-----|-----|------------|
| HEC-25-S  | 42"  | 42"  | 8" x 8"                           | Filter tube length + 1/2" for both clean<br>and dirty side removal. | Hopper Height + FS, once bag<br>length has been selected | 42" | 18" | 2,800      |
| HEC-36-S  | 49"  | 49"  | 10" x 10"                         |   |  | 42" | 18" | 5,000      |
| HEC-64-S  | 63"  | 63"  | 10" x 10"                         |   |  | 42" | 18" | 9,000      |
| HEC-100-S | 77"  | 77"  | 12" x 12"                         |   |  | 42" | 24" | 15,000     |
| HEC-144-S | 91"  | 91"  | 12" x 12"                         |   |  | 42" | 24" | 21,000     |
| HEC-196-S | 105" | 105" | 14" x 14"                         |   |  | 42" | 24" | 29,000     |
| HEC-256-S | 119" | 119" | 16" x 16"                         |   |  | 42" | 30" | 38,000     |

# HEC BIN VENT

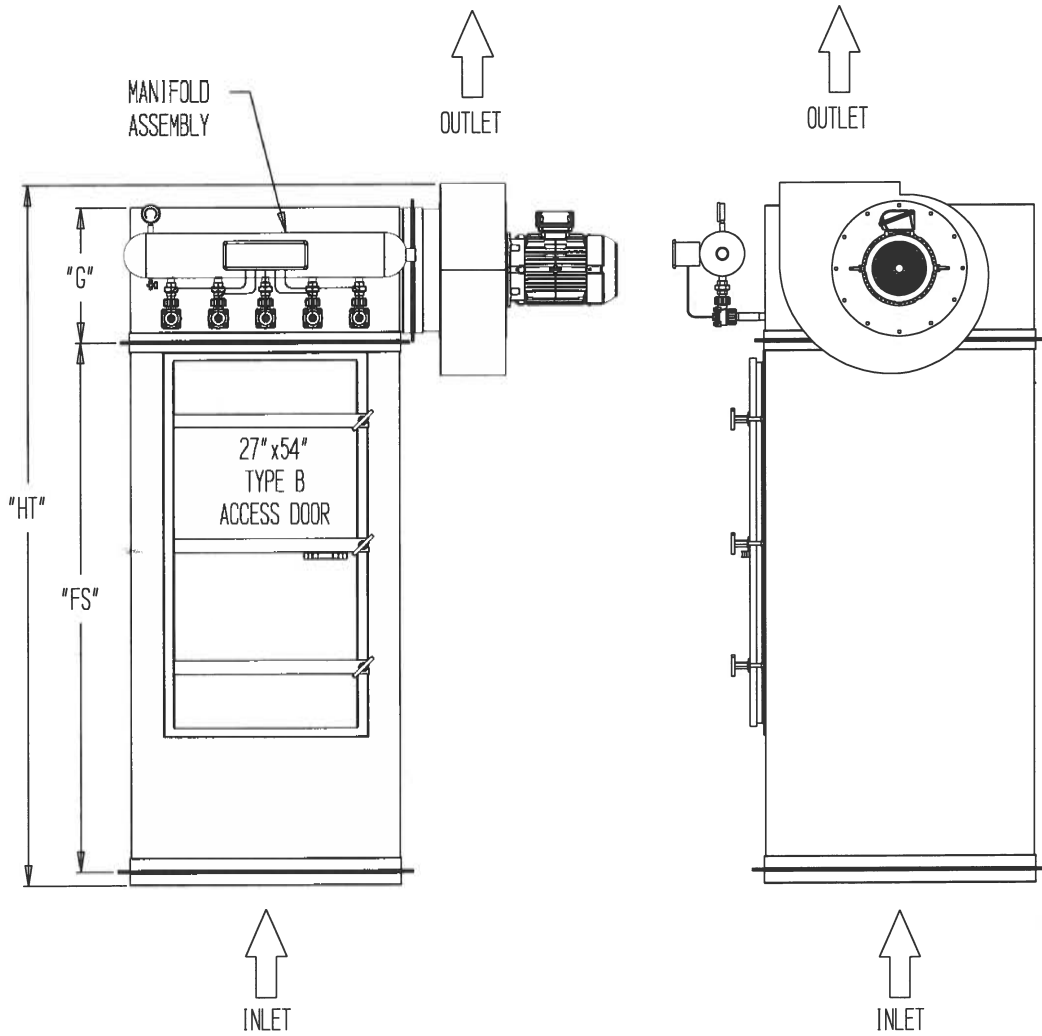
The HEC bin vents have been designed to release pressure buildup in storage silos and bins during their loading cycle. The bin vent features a pulse jet self cleaning system which utilizes compressed air to clean the filters. This is accomplished by using a series of solenoid-controlled valves which are activated by a timer to release a jet of compressed air from the dust collector's manifold. The air travels under pressure through a piped system to a nozzle directly over a venturi, and into the bag.

This series allows for 24/7 dust collection with minimal downtime, and ships preassembled with an extremely low cost of installation and space required. Available in an open bottom set up, or hoppers with rotary air locks.





NOTE:  
EXHAUSTERS CAN BE DIRECT OR BELT DRIVE  
DEPENDING ON CFM REQUIRED. THEY CAN BE  
MOUNTED ON TOP, REMOTE MOUNTED OR SIDE  
MOUNTED AS SHOWN. MOUNTING DEPENDS ON  
HEIGHT RESTRICTIONS PROVIDED BY THE  
CUSTOMER.



# Contact Us



430 Franklin Blvd.  
Cambridge ON Canada N1R 8G6



(519) 621-6210



(519) 621-2841



4nodust@nrmurphy.com



nrmurphy.com | 4nodust.ca

**More Experience**  
**More Quality**  
**More Value**

