



FB SERIES

FBP
FBMW
FBA
FBO
FBK
FBRW



N.R. MURPHY LTD.

DUST COLLECTORS

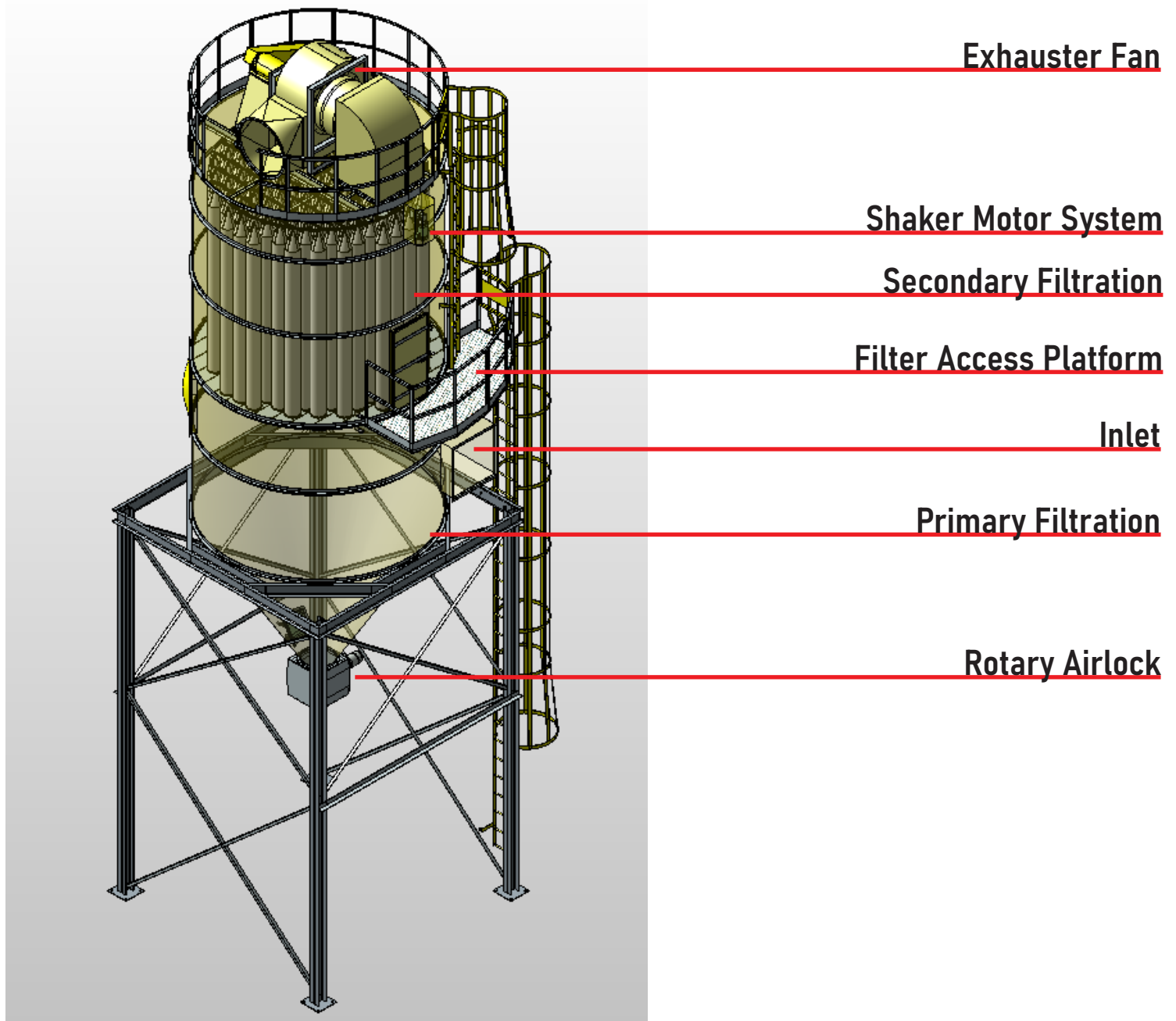
OVERVIEW

FBP	4
FBMW	6
FBA	8
FBO	10
FBK	12
FBRW	14



FB SERIES MANUAL
www.nrmurphy.com/manuals

N.R. Murphy Ltd.'s FB Series Dust Collectors offer a cylindrical design, with tube style filters and mechanical shaker style cleaning. This series integrates a cyclonic component for greater separation of large dust particles.



FEATURES

- High efficiency
- Customizable design
- Shipped preassembled
- Satin Coat Construction
- Zinc coated hardware
- Energy efficient starter
- Continuous material discharge
- Automatic bag shaker

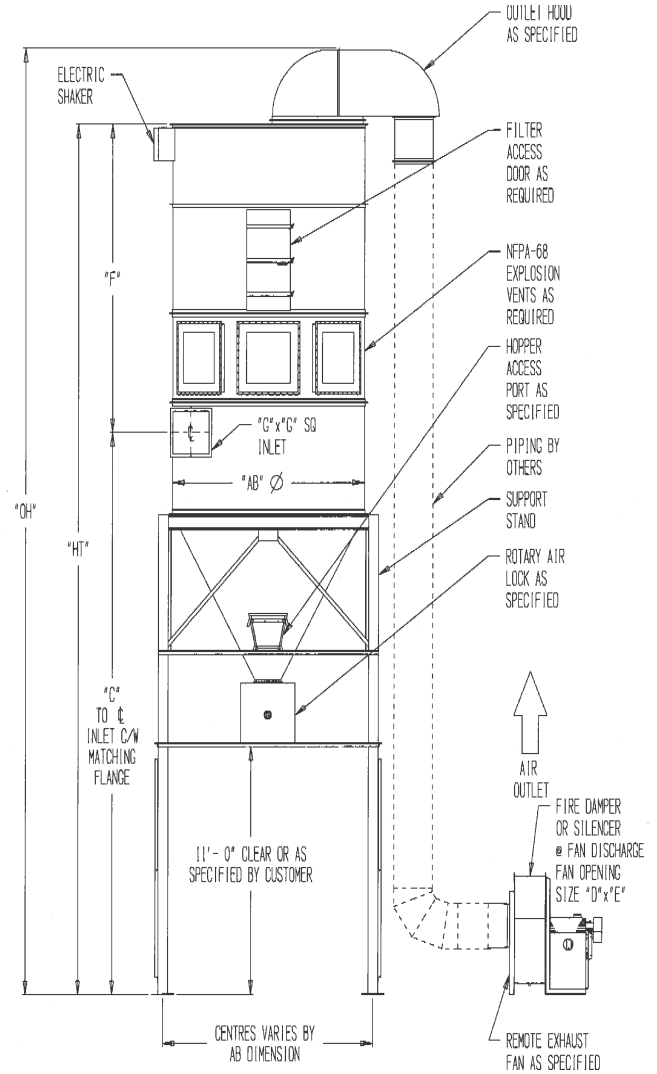
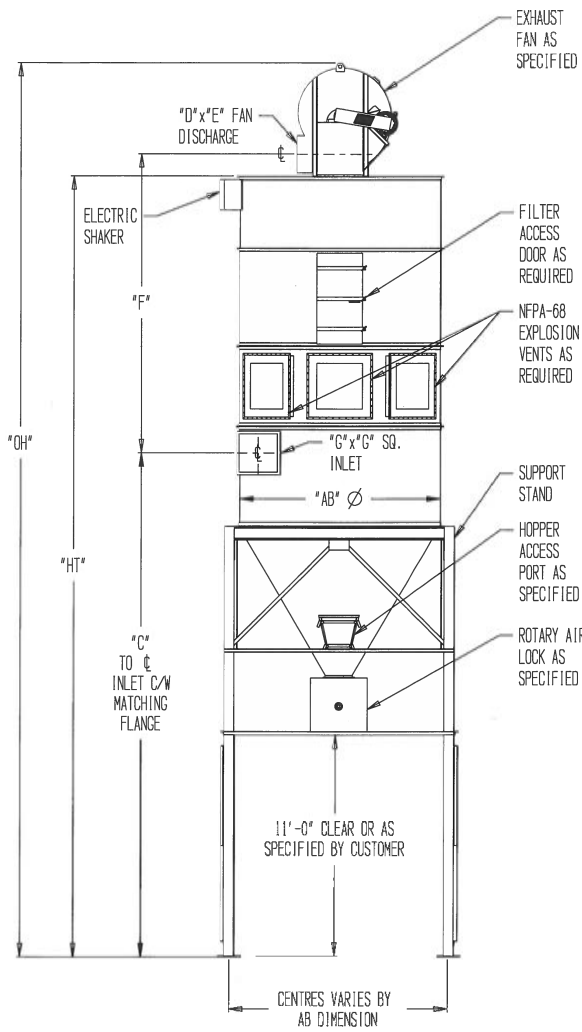
FBP

The FBP dust collector is designed to handle your toughest problems. With capacities from 3,900 to 35,000 cfm this dust collector can handle heavy dust loads and for years has been one of our most popular models. Material is continuously discharged through a rotary air lock to support larger volumes. Options for a screw conveyor and transfer fans are also available.

When the material enters the unit inlet, it immediately enters the primary cyclonic separation section. Here the heavier particles of the dust are removed and deposited directly into discharge. The remainder of dust is blown through the filter section and clean air cycled through the exhauster and back to the clean air return. Following shutdown the collector will shake the bags clean, and the rotary air lock will continue cycling to ensure that all material is removed from the collector.



*Standard motors indicated are 3 phase, 60 cycle T.E.F.C. high efficiency. Other motor sizes available. Check EA-1 exhaust fan performance charts for required C.F.M. and resistance in N.R. Murphy Ltd.'s exhaust fan catalogue. NOTE: The C.F.M. mentioned in charts are a guide only. Please check with factory. Normal pressure drop allowance across units is 3" SP. N.R. Murphy Ltd. reserves the right to make changes to the information presented, product changes, and correct typographical errors without notice.



Model Number	AB	C	Fan Outlet		Unit Inlet	HT	OH	Std. Unit H.P.	Recommended C.F.M.	Filter Area		Std. Bin Capacity cu.ft.	Extra Bin Cap. per Section	Approx Unit Weight	Approx. Stand Weight	
			D	E						Total sq.ft. of filter media	Total sq.ft. of filter w option					
FBP 13	7'-6"	22'-6½"	11"	12 5/8"	7'-1 13/16"	13"	29'-0"	32'-4½"	15	3900	520	848	350	176	2850	2800
FBP 15	7'-6"	25'-5½"	12 5/8"	14½"	8'-1 3/4"	15"	32'-10"	36'-7 7/8"	20	5200	616	1005	450	176	4200	2800
FBP 17	7'-6"	25'-4½"	14 3/8"	16¼"	9'-2 3/4"	17"	33'-9"	38'-0 3/8"	25	6600	723	1177	450	176	4800	2800
FBP 19	7'-6"	25'-3½"	16"	18¼"	10'-4 3/4"	19"	34'-9"	39'-5 5/8"	30	8200	838	1366	450	176	5960	2800
FBP 21	10'-0"	23'-8½"	17 5/8"	20 1/8"	10'-11 3/16"	21"	32'-10"	38'-0 1/8"	40	10000	1331	2149	650	314	7340	3100
FBP 23	10'-0"	23'-7½"	19 1/4"	22 1/8"	11'-31 3/16"	23"	33'-10"	39'-5 5/8"	50	12000	1527	2465	650	314	8640	3100
FBP 26	10'-0"	23'-6"	21 7/8"	24 7/8"	13'-0 13/16"	26"	35'-4"	41'-7 5/8"	60	15300	1871	3019	650	314	9940	3100
FBP 29	11'-6"	23'-4½"	24 3/8"	27 3/4"	4'-8 3/4"	29"	35'-4"	38'-9"	75	19200	2334	3949	700	412	12260	5160
FBP 33	11'-6"	23'-2½"	27 7/8"	31 3/8"	4'-4 15/16"	33"	36'-10"	40'-3"	100	24800	2738	4631	700	412	13260	5160
FBP 38	13'-0"	23'-2"	27 7/8"	31 3/8"	12'-1"	38"	36'-8"			26000	3762					
FBP 42	14'-6"	22'-10"	31"	34 7/8"	20'-0"	42"	44'-3"			35000	4545					

FBMW

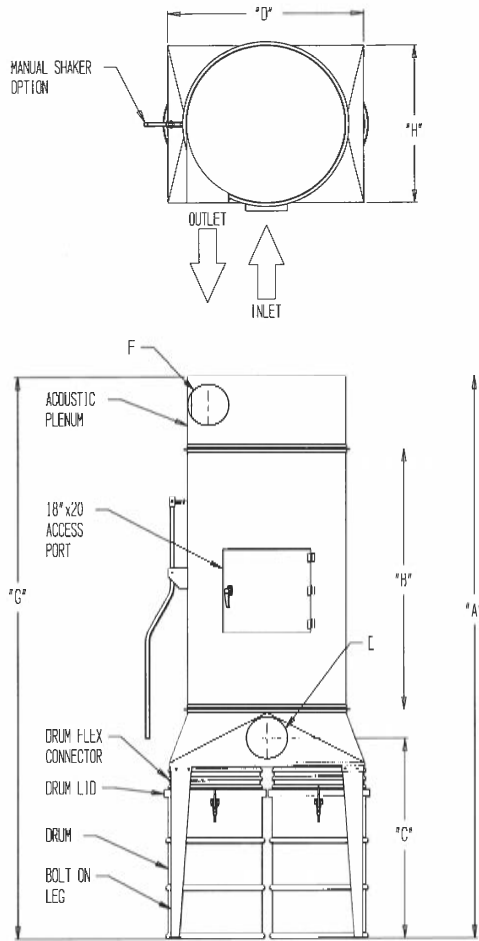
With capacities ranging from 1,144 to 3,250 cfm the FBMW is ideally suited for small shops. This dust collector is available in two sizes, 9" and 10", each with several different types of storage arrangements. Suitable for interior or exterior locations (subject to local Codes) the FBMW is designed for light or intermittent dust loads.

When the material enters the unit inlet, it immediately enters the primary cyclonic separation section. Here the heavier dust particles are removed and deposited directly into discharge. The remainder of dust is sucked through the filter section and clean air cycled through the exhauster and back to your clean air return. This means that the exhauster fan will only be running through clean air - extending the lifetime of your system. Available with one or two drum storage.

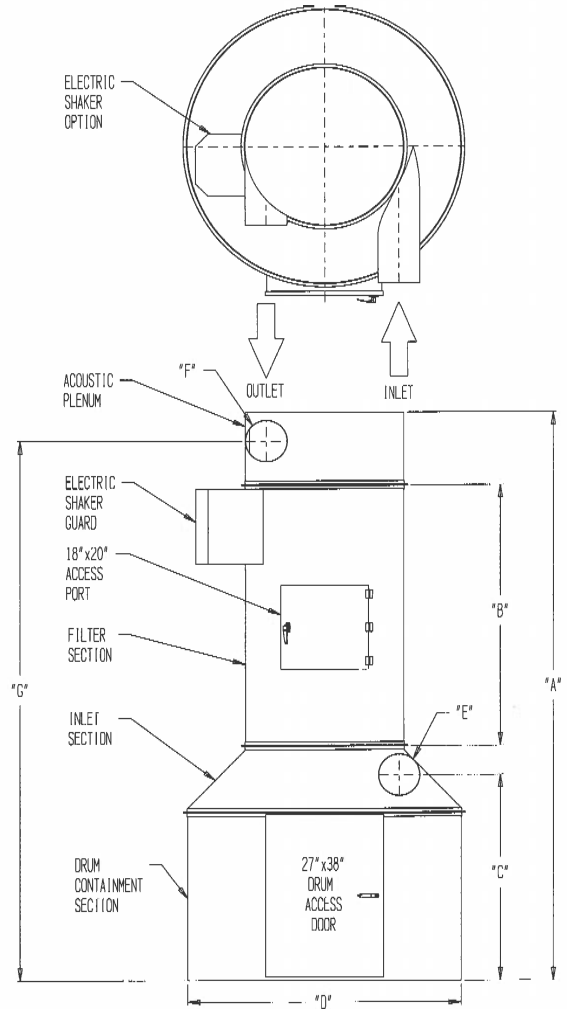


*Standard motors indicated are 3 phase, 60 cycle T.E.F.C. high efficiency. Other motor sizes available. Check EA-1 exhaust fan performance charts for required C.F.M. and resistance in N.R. Murphy Ltd.'s exhaust fan catalogue. NOTE: The C.F.M. mentioned in charts are a guide only at 6" S.P. - please check with factory. N.R. Murphy Ltd. reserves the right to make changes to the information presented, product changes, and correct typographical errors without notice. Sound levels are with the inclusion of an inline silencer, averaged from 4'-8' distance from unit.

Arrangement G



Arrangement H & J



Size	Arrangement G w/ 2 Drum								Performance						
	A	B	C	D	E	F	G	H	Wt.	CFM	Fan RPM	Motor HP	Sq.ft of Filter	Bag Length	dB Sound Level
9	125½	53½	48	48	9	10	118½	38	469	1500	3450	5	137	43	78
10	141	70½	47½	48	10	10	121½	38	465	3250	3420	7.5-10	176	55	76*

Size	Arrangement H w/ 3 Drums								Arrangement J				Performance						
	A	B	C	D	E	F	G	Wt.	A	C	D	G	Wt.	CFM	Fan RPM	Motor HP	Sq.ft of Filter	Bag Length	dB Sound Level
9	124½	53½	47	57	9	10	117½	830	127	49½	66	120	944	1500	3450	5	137	43	78
10	143½	70½	46½	57	10	10	124	1006	146	49	66	126½	1122	3250	3420	7.5-10	176	55	76*

FBA

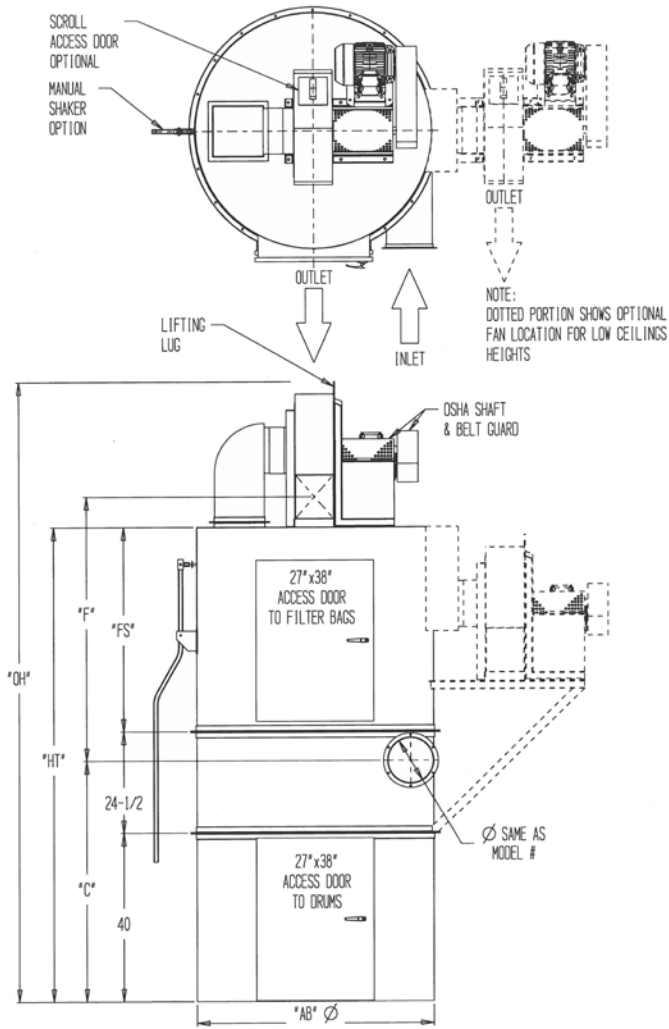
The FBA dust collector is ideally suited for small sized industries and has capacities ranging from 2,500 to 8,200 cfm. Available with drum or hopper storage it can also be fitted with a rotary air lock for continuous discharge into a dumpster bin. The FBA style dust collector is suitable for medium or intermittent dust loads and is available with a variety of filter media.

The FBA unit is divided into 4 basic sections, the top section being the exhauster, motor and drives, the bottom section being the storage containers for the collected waste material. The centre two sections are the primary and secondary filtration units. The material enters the unit via the inlet duct into the cyclonic separation section to remove the heavy particles. The section immediately above it is the secondary filtration area where tubular filters are used with various filter media to efficiently clean the air.

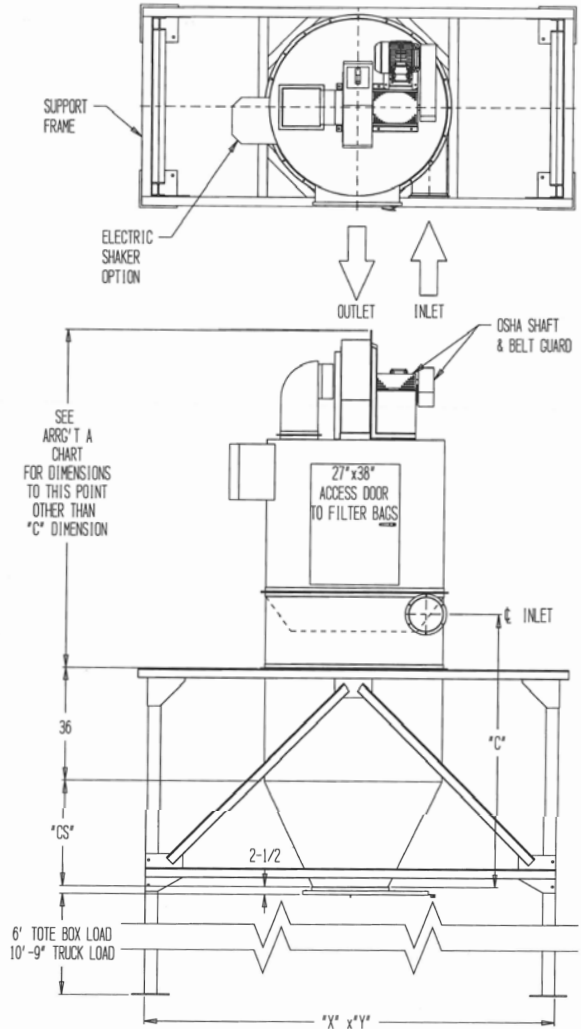


*Standard motors indicated are 3 phase, 60 cycle T.E.F.C. high efficiency. Other motor sizes available. Check EA-1 exhaust fan performance charts for required C.F.M. and resistance in N.R. Murphy Ltd.'s exhaust fan catalogue. NOTE: The C.F.M. mentioned in charts are a guide only. Please check with factory. Normal pressure drop allowance across units is 3" SP. N.R. Murphy Ltd. reserves the right to make changes to the information presented, product changes, and correct typographical errors without notice.

Arrangement A



Arrangement B



Arrangement "A"														
Model	AB	C	Fan Outlet		F	FS	HT	OH	Drums	Std. H.P.	CFM	Filter Media sqft		Weight
			D	E								Std.	Opt.	
FBA11	57"	57½"	9¾"	10⅝"	63½"	49	113½"	148¾"	3	7.5	2600	157	229	1400
FBA13	57"	56½"	11"	12⅝"	77¾"	61	125½"	165⅞"	3	10	3600	204	297	1600
FBA15	66"	55½"	12⅝"	14½"	79¼"	61	125½"	171¼"	4	15	4800	253	424	1800
FBA17	76"	54½"	14¾"	16¼"	69¾"	49	113½"	164¾"	6	20	6200	278	433	2200
FBA19	76"	53½"	16"	18¼"	83¼"	61	125½"	182"	6	25	7800	360	561	2600

Arrangement "B"					
Model	C	CS	X Dim. For		Y
			Tote Box	Truck	
FBA11	87½"	34"	96"	132"	57½"
FBA13	86½"	34"	96"	132"	57½"
FBA15	87½"	36"	96"	132"	76½"
FBA17	106½"	56"	96"	132"	76½"
FBA19	105½"	56"	96"	132"	76½"

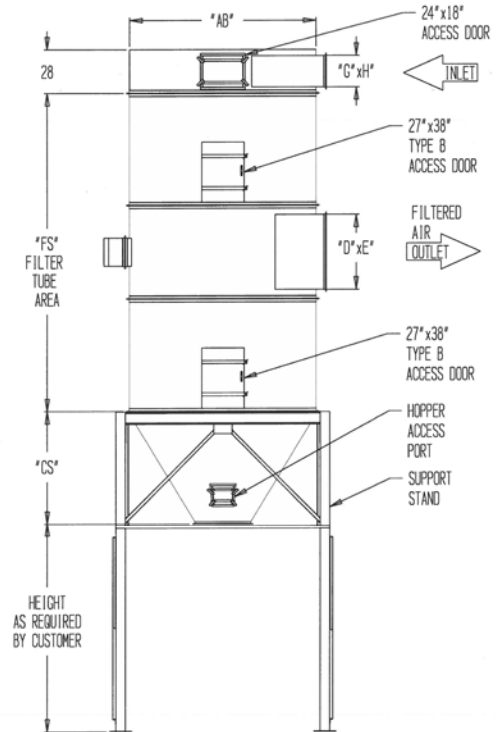
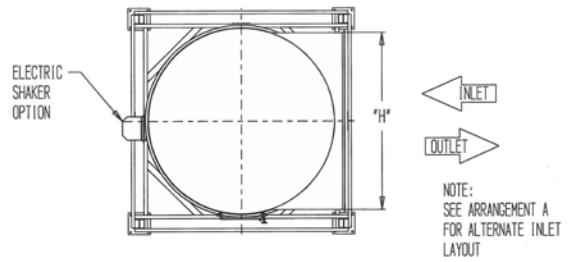
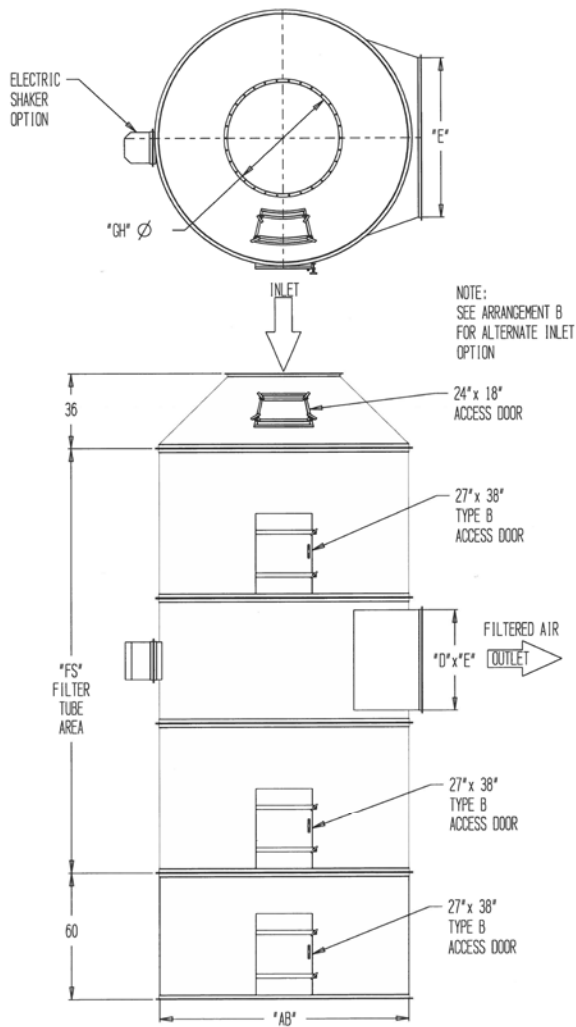
FBO

The FBO dust collector is designed to be used in conjunction with an existing cyclone, and is available in 90 standard designs. These dust collectors allow the exhaust air from a cyclone to be filtered and returned to the facility, thus conserving energy. Multiple units can be installed for extremely large installations.

Available in large projects, or in small shop environments, help bring your outdated system up to date, and increase HVAC efficiency. Options include: booster fans, rotary air locks, explosion venting, manometer (static gauge), multiple inlets, fire dampers, or alternative filter media to fit any need. Further benefits include: less environmental impact, heat savings, fire hazard control, clean up cost reduction, eliminates negative pressure and controls any drafts in manufacturing operations.



*Standard motors indicated are 3 phase, 60 cycle T.E.F.C. high efficiency. Other motor sizes available. Check EA-1 exhaust fan performance charts for required C.F.M. and resistance in N.R. Murphy Ltd.'s exhaust fan catalogue. NOTE: The C.F.M. mentioned in charts are a guide only. Please check with factory. Normal pressure drop allowance across units is 3" SP. N.R. Murphy Ltd. reserves the right to make changes to the information presented, product changes, and correct typographical errors without notice.



AB	CO	CS	D X E	FS	GH	G X H
Unit Diameter	Round Outlet	Cone Height	Filtered Air Outlet	Bag Length	Inlet Diameter	Optional Inlet
57"	As Required	As Required by CO	18" x 48"	10' up to 26'	26"	20" x 30"
76"			30" x 48"		34"	20" x 48"
90"			40" x 60"		43"	20" x 86"
120"			48" x 77"		54"	20" x 114"
138"			60" x 84"		60"	20" x 138"

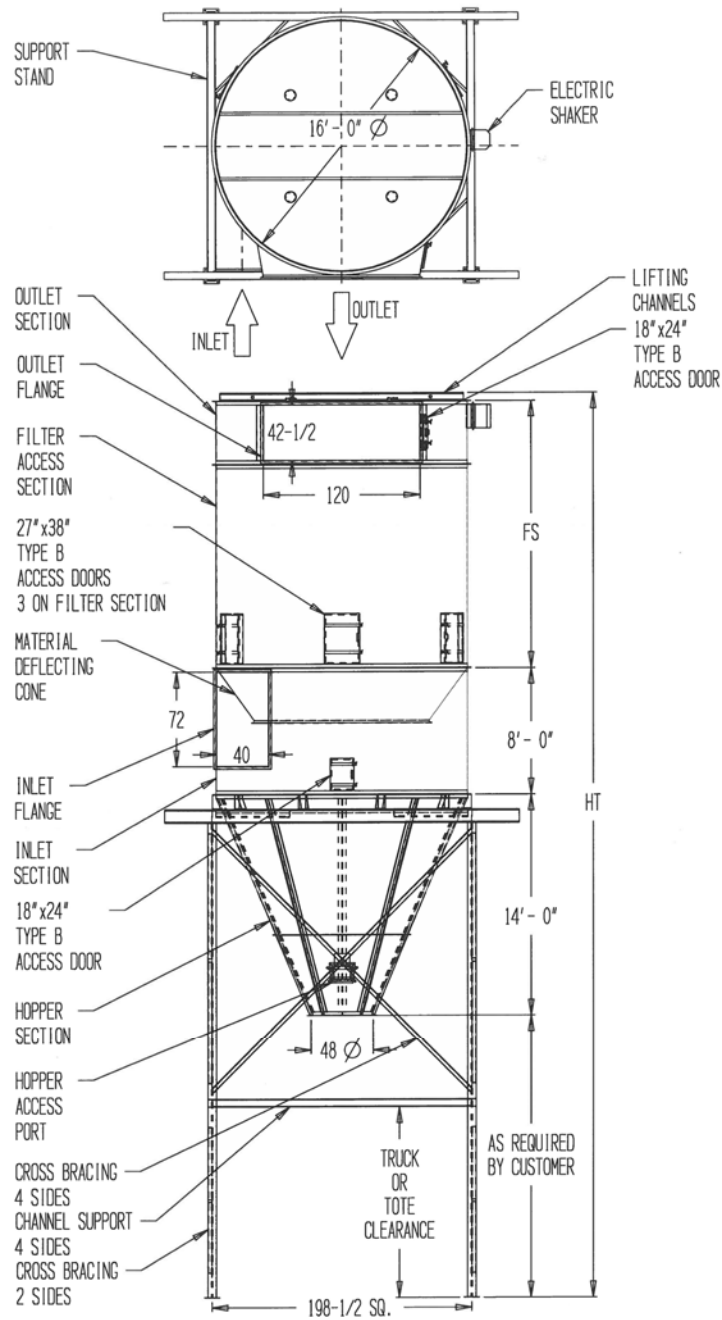
FBK

This blow through design dust collector has been designed primarily for the woodworking , textile and corrugated cardboard/paper industries. The FBK dust collector is available with capacities ranging from 30,000 to 70,000 cfm. It features multiple inlets and can handle heavy dust/material loads. Material is discharged through a rotary air lock, and typically into a baler, storage bin or a conveying system.

Featuring a material deflecting cone, which allows for an efficient primary filtration to preserve your filter media. Available in 5 standard sizes, with potential options to include a rotary air lock and alternative filter media. Because of the sheer physical size of the units, this model is generally shipped from the factory in approximately 20 sections. All sections are marked and a drawing is supplied for easy identification and assembly.



*Standard motors indicated are 3 phase, 60 cycle T.E.F.C. high efficiency. Other motor sizes available. Check EA-1 exhaust fan performance charts for required C.F.M. and resistance in N.R. Murphy Ltd.'s exhaust fan catalogue. NOTE: The C.F.M. mentioned in charts are a guide only. Please check with factory. Normal pressure drop allowance across units is 3" SP. N.R. Murphy Ltd. reserves the right to make changes to the information presented, product changes, and correct typographical errors without notice.



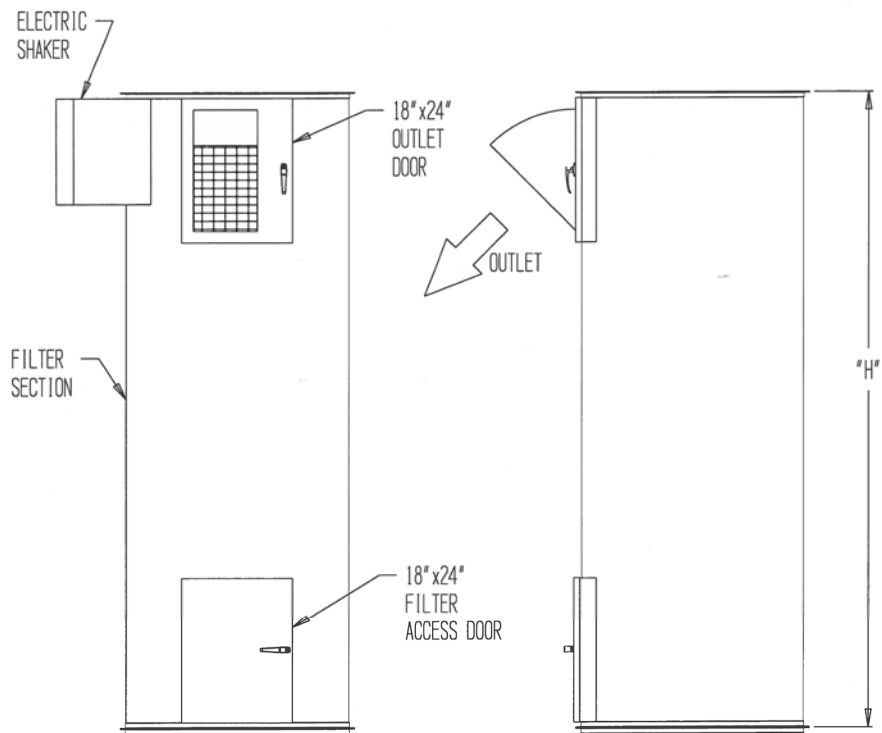
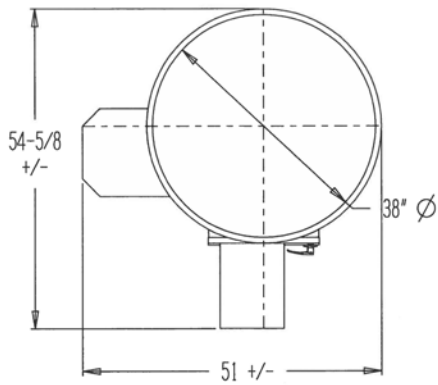
Model	HT	FS	Suggested CFM	Sq.Ft. Filter Media	Unit Weight	Stand Weight
FBK-37	31'	8'-6"	30,000	4310	19,000 lbs	9,200 lbs
FBK-41	32'-6"	10'	40,000	5162	20,000 lbs	9,200 lbs
FBK-45	35'-6"	13'	50,000	6820	21,000 lbs	9,200 lbs
FBK-49	37'-6"	15'	60,000	7957	22,000 lbs	9,200 lbs
FBK-51	39'-6"	17'	70,000	9093	23,000 lbs	9,200 lbs

FBRW

The FBRW-500 and FBRW-1000 bin vent dust collectors have been designed to release the pressure buildup in storage silos and bins during their loading cycle. An electric shaker with a magnetic starter and momentary pushbutton for filter cleaning is standard equipment with each dust collector. An optional direct drive fan pack is available for this type of collector. Custom designed bin vents are also available.

This series is shipped preassembled with an extremely low cost of installation and space required. Also includes two access doors with one door having a weather hood and bird screening for clean air release. Options include booster fans, alternate media and explosion venting.





Model	Diameter	Height	Access Doors	Filter Media	C.F.M.	Steel Gauge	Weight
FBRW-500	38"	5'	2 (18" x 24")	169	500	14 gauge	514lbs
FBRW-1000	38"	9'	2 (18" x 24")	324	1,000	14 gauge	600lbs

Contact Us



430 Franklin Blvd.
Cambridge ON Canada N1R 8G6



(519) 621-6210



(519) 621-2841



4nodust@nrmurphy.com



nrmurphy.com | 4nodust.ca

More Experience
More Quality
More Value

