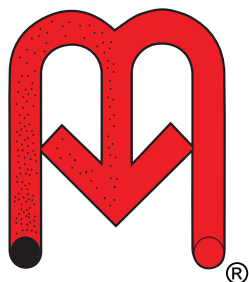




# MK SERIES

**MKA**  
**MKF**  
**MKOB**  
**MKHW**



**N.R. MURPHY LTD.**  

---

**DUST COLLECTORS**

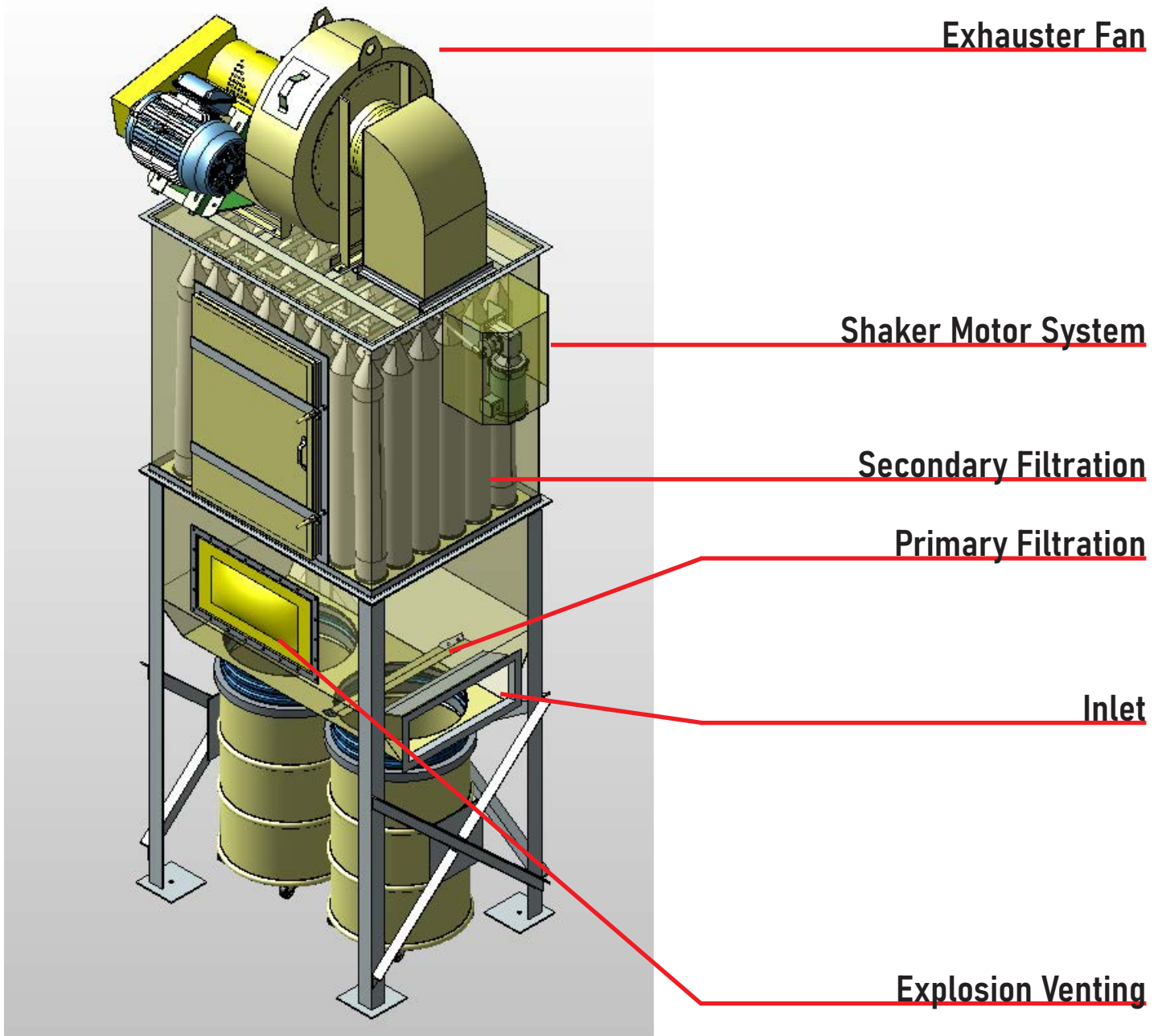
# OVERVIEW

MKA	4
MKF	6
MKOB	8
MKHW	10



MK SERIES MANUAL  
[www.nrmurphy.com/manuals](http://www.nrmurphy.com/manuals)

N.R. Murphy Ltd.'s MK Series Dust Collectors offer a square/rectangular design with tube style filters and mechanical shaker type cleaning. The MK Series maximizes the airflow to filter media ratio for efficient dust collection in a compact design across multiple industries.



#### FEATURES

- High efficiency
- Customizable design
- Ships preassembled
- Satin Coat Construction
- Zinc coated hardware
- Energy efficient starter
- Continuous material discharge
- Automatic bag shaker

# MKA

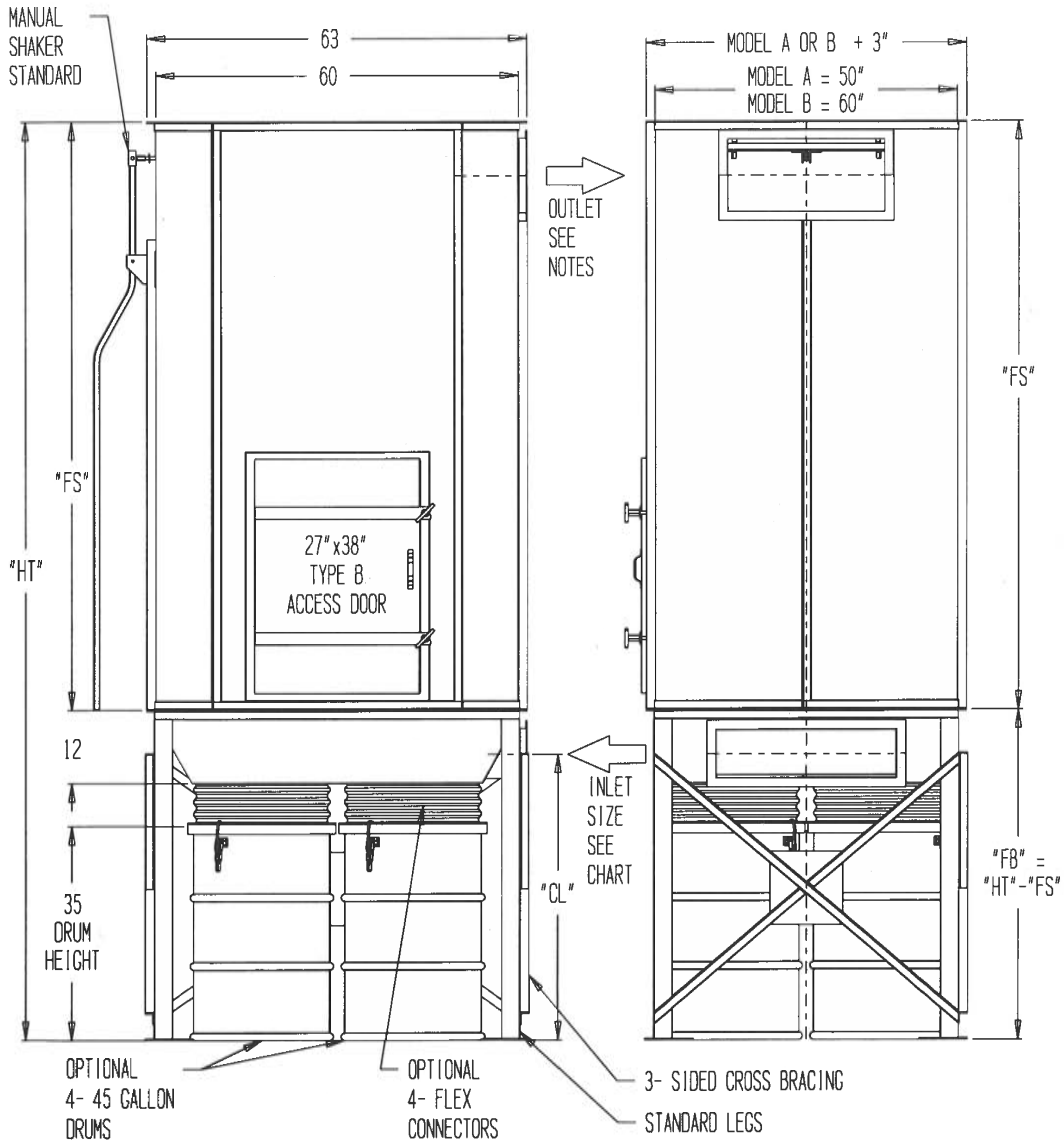
This compact dust collector is available in 1, 2, 4, or 6 drum storage, dumpster bin or with a hopper bottom for continuous discharge through a rotary airlock. With 3 different diameters of filter bags, to suit a variety of materials, the MKA is perhaps our most flexible dust collector.

The most outstanding feature is how compact this unit is, yet it has the capability of effectively filtering large volumes of air and occupies little valuable space when installed inside or outside of a building. The reduced size of these dust collectors also reflect great savings in regards to shipping costs over long distances. The MKA dust collector is extremely customizable with various fan and motor combinations, filter tube diameter, length and material, and can include explosion venting to meet any of your local codes. Can also include an acoustic cover to reduce the sound of the exhauster fan.



\*Standard motors indicated are 3 phase, 60 cycle T.E.F.C. high efficiency. Other motor sizes available. Check EA-1 exhaust fan performance charts for required C.F.M. and resistance in N.R. Murphy Ltd.'s exhaust fan catalogue. NOTE: The C.F.M. mentioned in charts are a guide only. Please check with factory. Normal pressure drop allowance across units is 3" SP. N.R. Murphy Ltd. reserves the right to make changes to the information presented, product changes, and correct typographical errors without notice.

SOLID DRUM CONNECTORS  
BOLT-ON LEGS



Model "A"	Model "B"	HT	FS	CL	Inlet Size	Sq.Ft. Model "A"	Sq.Ft. Model "B"
MKA-225-4D	MKA-270-4D	103"	49"	47"	8" x 30"	225	270
MKAW-355-4D	MKAW-445-4D					355	445
MKA-295-4D	MKA-350-4D	115"	61"	47"	8" x 30"	295	350
MKAW-460-4D	MKAW-575-4D					460	575
MKA-360-4D	MKA-430-4D	127"	73"	47"	8" x 30"	360	430
MKAW-565-4D	MKAW-705-4D					565	705
MKA-425-4D	MKA-515-4D	139"	85"	47"	8" x 30"	425	515
MKAW-670-4D	MKAW-825-4D					670	835
MKA-495-4D	MKA-595-4D	151"	97"	47"	8" x 30"	495	595
MKAW-775-4D	MKAW-965-4D					775	965

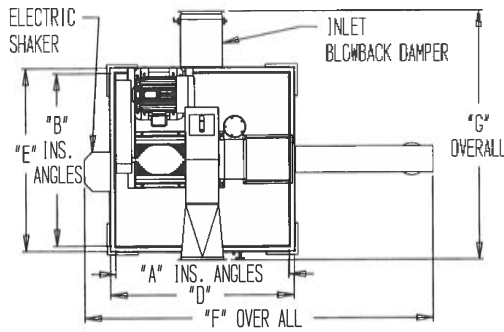
# MKF

The MKF dust collector is very rugged, reliable and is available in a variety of sizes to suit all scales of operations and waste volumes. It is a highly efficient dust collector suitable for large or medium capacity operations and waste volumes. The collector is available in square or rectangular configurations with various filter tube lengths. Featuring a heavy gauge galvanized, all welded build, the unit comes preassembled to be lifted off the shipping truck and onto a concrete pad.

The MKF dust collector can be fitted with options such as: safety ladder and platforms, extended stands, rotary air lock, screw conveyors, and a wide variety of other safety accessories. This makes the unit extremely flexible to fit any need, while maintaining the N.R. Murphy standard for high quality and easy maintenance.

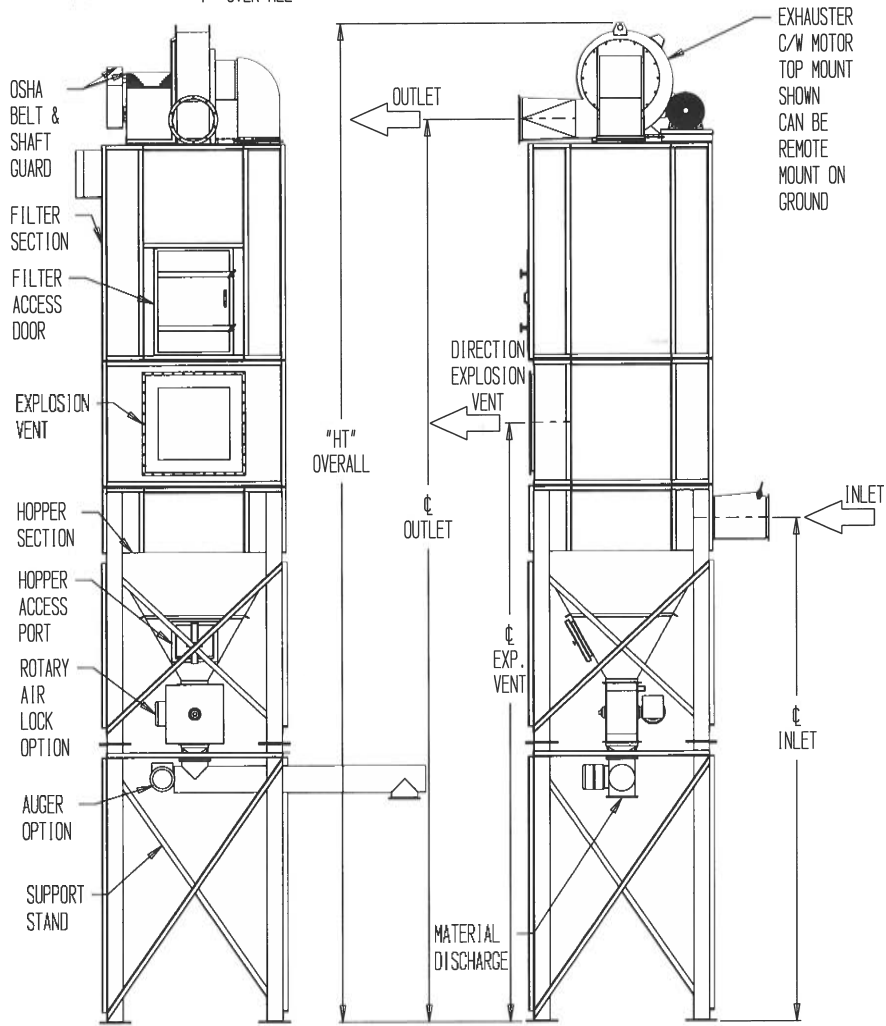


\*Where standards are shown, adjustments can be made to stated dimensions to suit a given application without effecting delivery. For bulky materials the discharge size would have to be increased. Inlets can be circular but are usually rectangular. C.F.M. is nominal types of dust, dust loading and air to cloth ratios must be considered.



NOTE:  
MFK UNITS ARE CUSTOM DESIGNED TO MEET  
OUR CUSTOMER'S NEEDS AND BUDGET.  
OTHER OPTIONS FOR THESE UNITS NOT SHOWN:

- A: NOISE REDUCTION SILENCER
- B: MATERIAL DISCHARGE TO DRUMS
- C: MATERIAL DISCHARGE TO TOTE BIN
- D: MATERIAL DISCHARGE TO SELF DUMPING BIN
- E: DRUM LIFTING RACKS
- F: AIR ABORT DAMPER



Design	Model	A	B	CO	CS	D & E	FS	G & H	HT	IS	L	SS	CFM
S Design	MKF-36-S	45"	45"	10" x 10"	31"	Size & configuration depends on model no & CFM requirements.	Add 7" to selected filter tube length.	(See D & E) Location on any side of inlet section.	= L + CS + SS + IS + FS Once filter length is selected.	17"	42" is required for one drum storage 72" has been allowed for tote box loading. 129" for truck loading.	49"	5,300
	MKF-64-S	59"	59"	10" x 10"	44"					17"			9,000
	MKF-100-S	73"	73"	12" x 12"	54"					25"			15,000
	MKF-144-S	87"	87"	12" x 12"	67"					25"			21,000
	MKF-196-S	101"	101"	14" x 14"	78"					37"			29,000
	MKF-256-S	115"	115"	16" x 16"	89"					37"			38,000

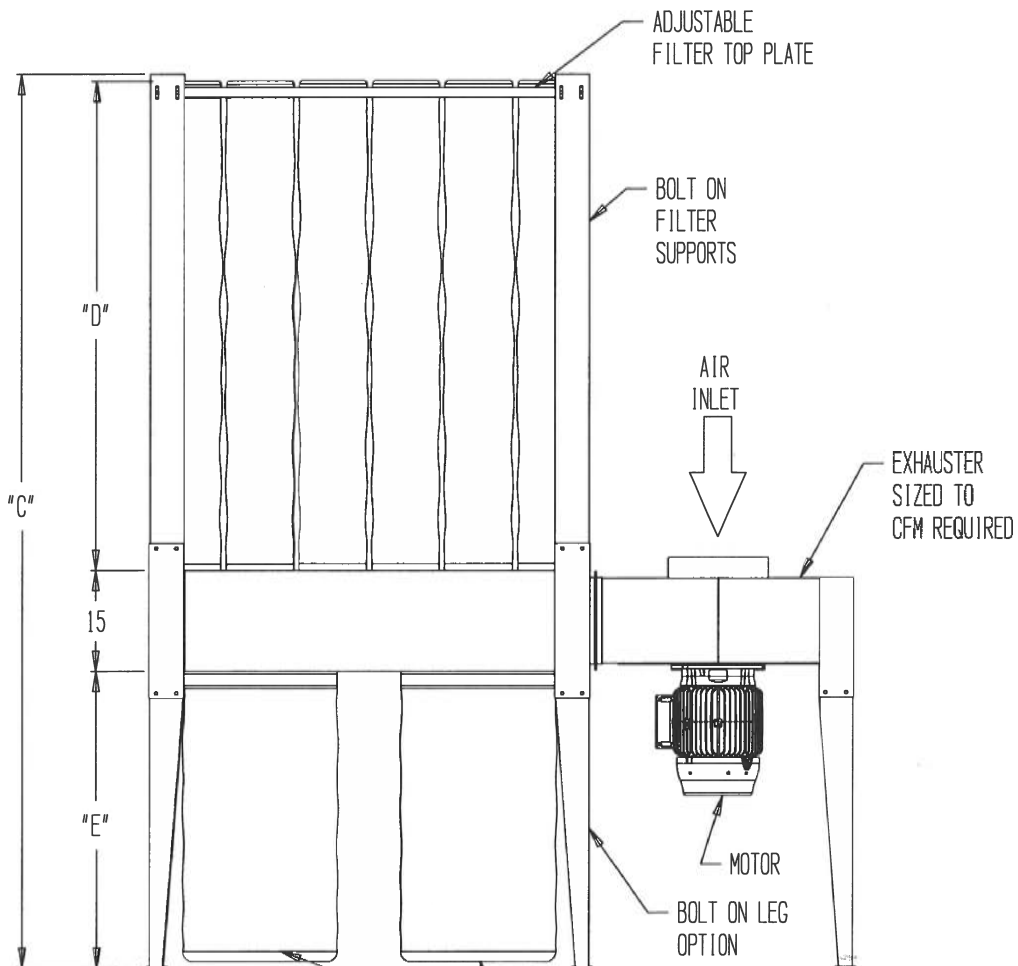
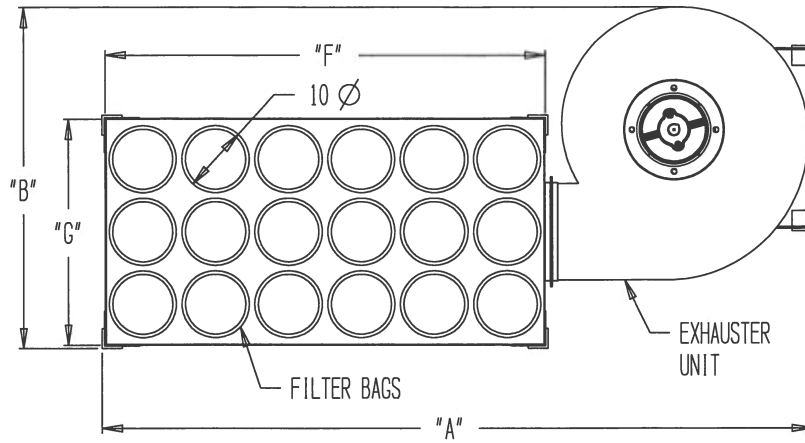
# MKOB

The MKOB open bag unit is an extremely versatile, yet powerful dust collector that fits a variety of needs. Perfect for small shops that require a high-quality dust collector, or large shops looking to incrementally increase their dust collection capacity without having to invest into fully replacing their existing collector. This unit is flexible to meet most regulations, allowing the unit to sit inside the shop.

Available in a variety of design, the MKOB can come in filter diameters as small as 3½” up to 24”, and can include drum storage, plastic refuse bags, or even self-dumping hoppers. Designed and built to allow for quick installation, operation and maintenance in a wide variety of applications including woodworking, plastics, and metalworking.







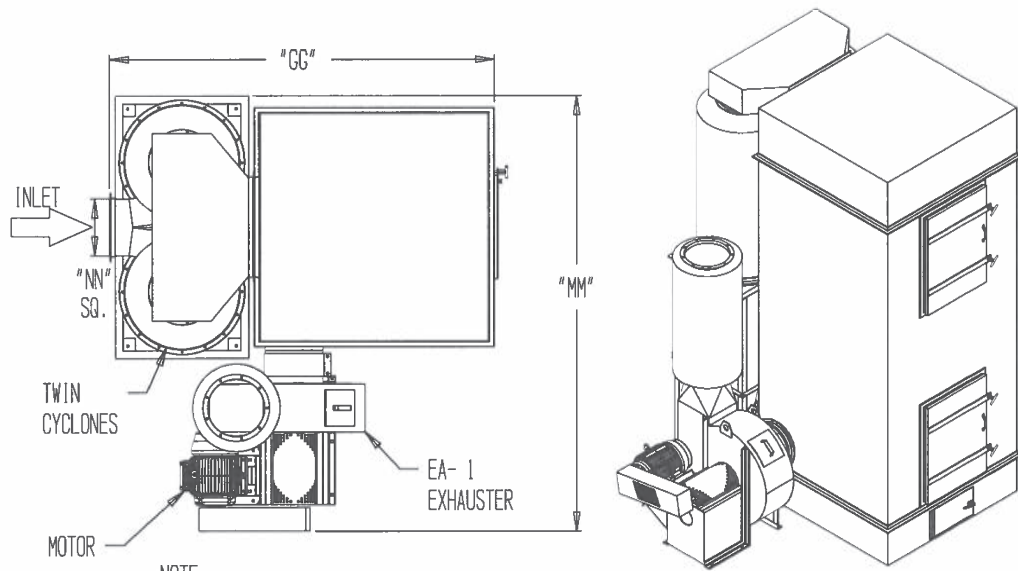
- DISCHARGE OPTIONS:  
 A: REFUSE BAGS  
 B: DRUM STORAGE  
 C: SELF DUMPING BIN  
 D: HOPPER TO ROTARY AIR LOCK  
 E: ROLLING BIN STORAGE

# MKHW

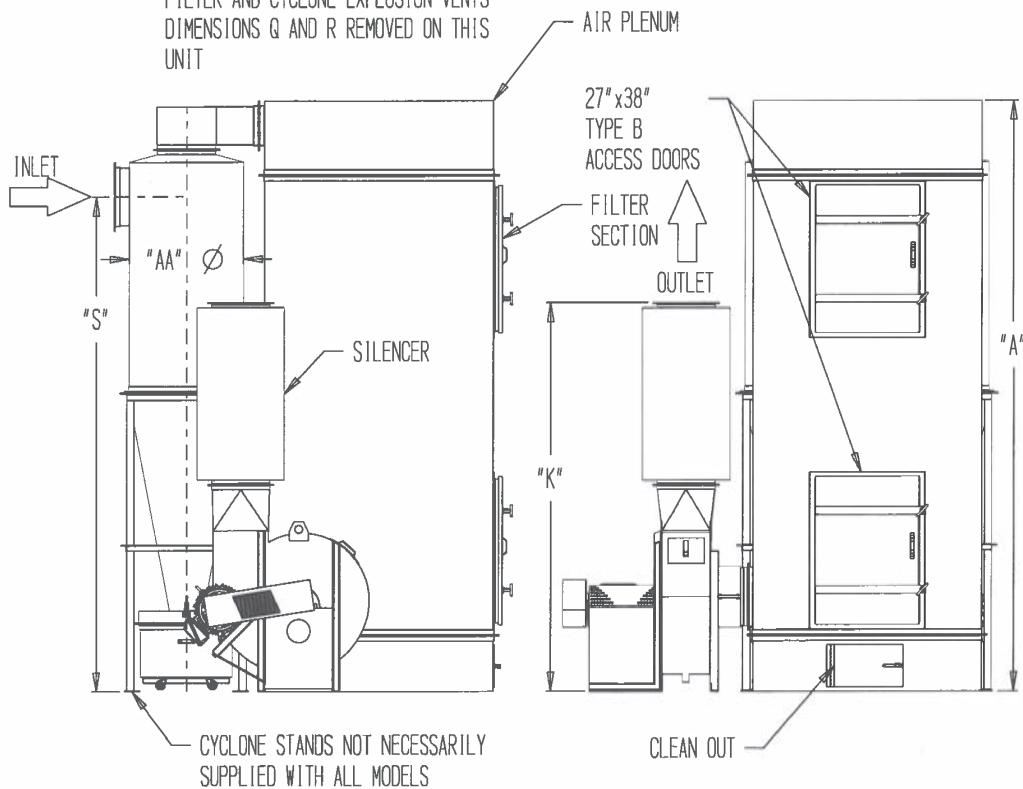
The MKHW powder paint dust collector has been designed for use in the powder coatings industry. This standard system has a high-efficiency primary cyclonic separator which reduces the problem of colour contamination in the reusable material. The cyclone is connected to a secondary multi-tube after filter and an industrial exhauster. Various material reclamation options are available.

The MKHW can also be adapted to other industries for collecting all types of reusable or waste materials. Options include: extra storage containers, explosion venting, special in-line silencers, return air fire dampers, inlet blow-back prevention dampers, and inlet control damper for twin cyclones.





NOTE:  
 FILTER AND CYCLONE EXPLOSION VENTS  
 DIMENSIONS Q AND R REMOVED ON THIS  
 UNIT



CYCLONE STANDS NOT NECESSARILY  
 SUPPLIED WITH ALL MODELS

MKHW	Fan Size	Motor	Silencer	A	K	Q	R	S	AA	CC	GG	MM	NN	Cyclone Bucket Dia.
Sq.Ft. Filter Media	Type EA-1	H.P.	I/D x O/D x Length											
641	13"	15	13" x 21" x 41½"	146"	89¼"	76½"	152½"	122"	26"	7"	87"	103⅞"	13" sq.	18" Dia.
824	15"	15	15" x 23" x 47½"	154"	101¼"	78½"	160½"	129"	30"	8"	101"	114½"	15" sq.	24" Dia.
1060	17"	20	17" x 25" x 54"	165"	114½"	97½"	171½"	136"	34"	9"	105"	128⅝"	17"	24" Dia.

# Contact Us



430 Franklin Blvd.  
Cambridge ON Canada N1R 8G6



(519) 621-6210



(519) 621-2841



[4nodust@nrmurphy.com](mailto:4nodust@nrmurphy.com)



[nrmurphy.com](http://nrmurphy.com) | [4nodust.ca](http://4nodust.ca)

**More Experience**  
**More Quality**  
**More Value**

